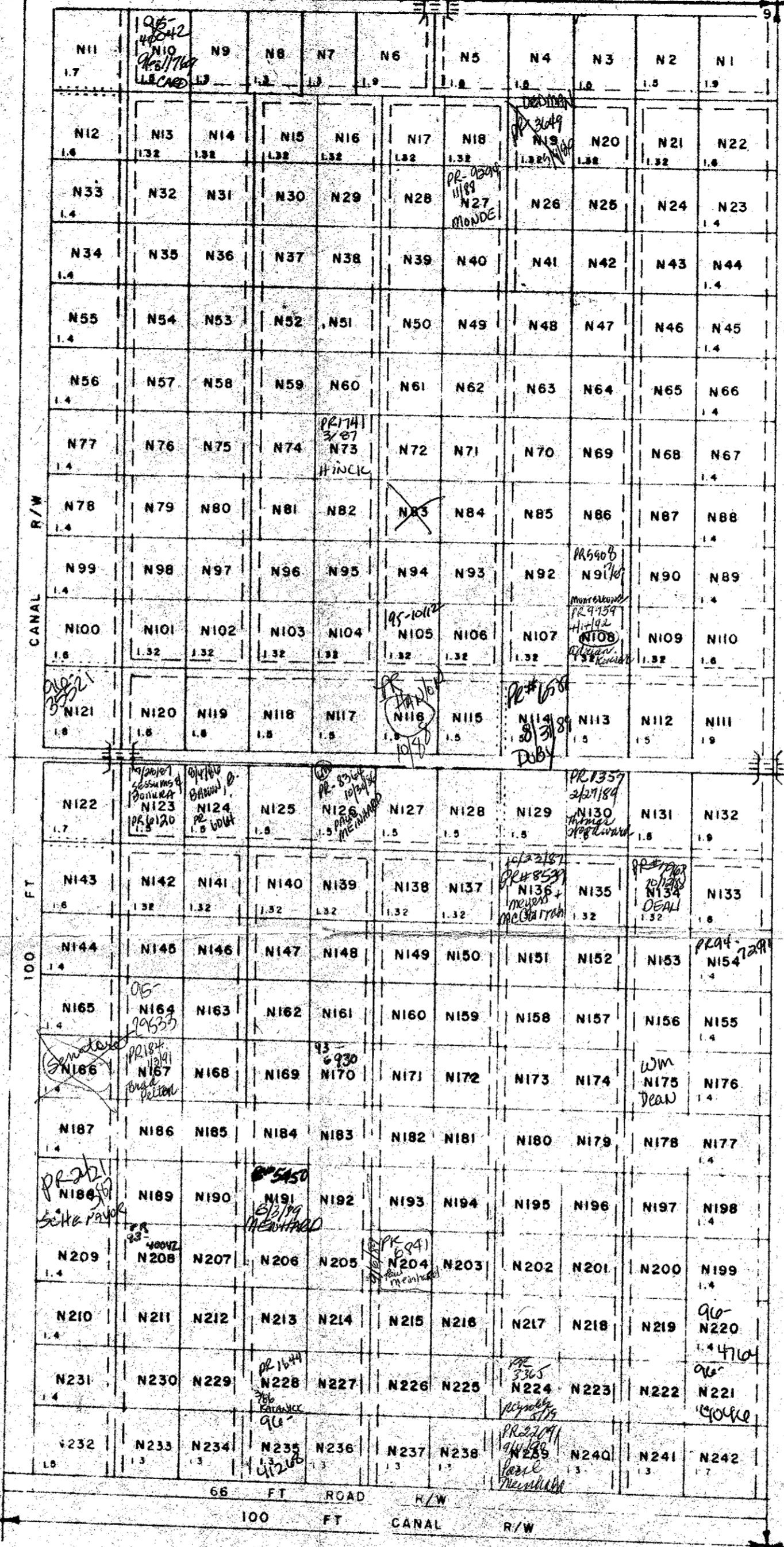


174
173

473
9 10 50 FT CANAL R/W

NOT INCLUDED

NOT INCLUDED



ur0350.igr
PB COUNTRY ESTATES 41-41-9 UNIT N

PARCELS CONTAIN 1.15 ACRES EACH UNLESS OTHERWISE MARKED.
ALL ACREAGE VALUES ARE PLUS OR MINUS
ACCESS ROADS AND DRAINAGE EASEMENTS
DRAINAGE EASEMENTS ONLY

NOTE
ALL PARCELS HEREON ARE EQUAL TO OR EXCEED A
MINIMUM OF ONE ACRE, EXCLUSIVE OF ROAD EASEMENTS.

A DRAFTING DEVELOPMENT OF
THE EAST HALF OF SECTION 9
TOWNSHIP 41 SOUTH, RANGE 41 EAST

ALL CONTAINED IN THE DEED OF LIPITER FARMS AND GROVES, RECORDING OFFICE PALM BEACH COUNTY, FLORIDA, UNDER THE
 RECORDED IN PLAT BOOK 24 PAGE 7 PUBLIC RECORDS OF PALM BEACH COUNTY, FLORIDA, SUBJECT TO
 EASEMENTS FOR CANALS AND ROADS, THOSE THEREIN & PRIVATE RIGHTS OF WAY THEREIN.

SOLROFF & ASSOCIATES
 ENGINEERS & SURVEYORS
 24 FIFTH STREET
 LAKE PARK, FLORIDA 33404
 PHONE 335-3318
 FISHING HOLE

MAY 12 1967

PALM BEACH COUNTRY ESTATES SECTION "N"
 PALM BEACH COUNTY, FLORIDA
 FOR PALM BEACH DEVELOPMENT AND SALES CORP.